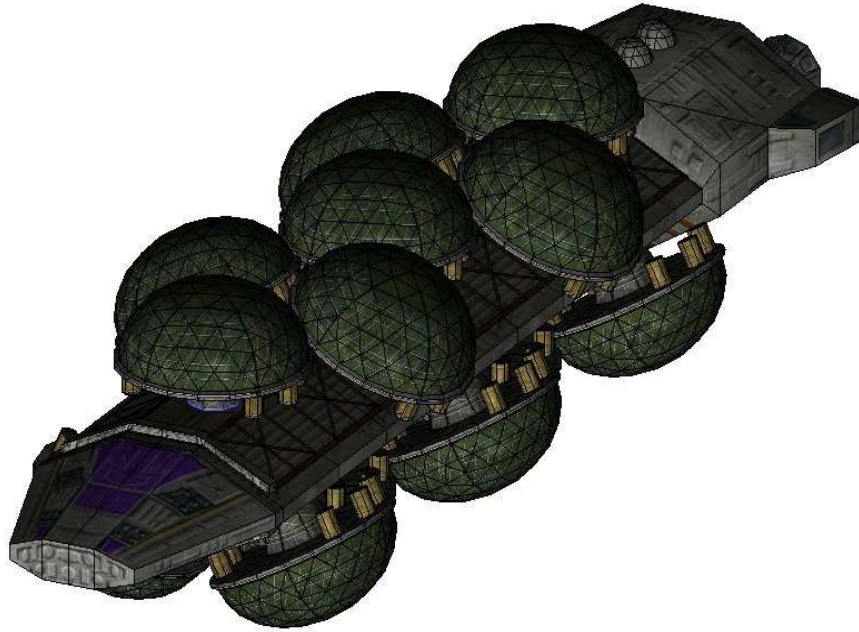


Battlestar Galactica Colonial Fleet Agricultural Ship



Assembly Instructions

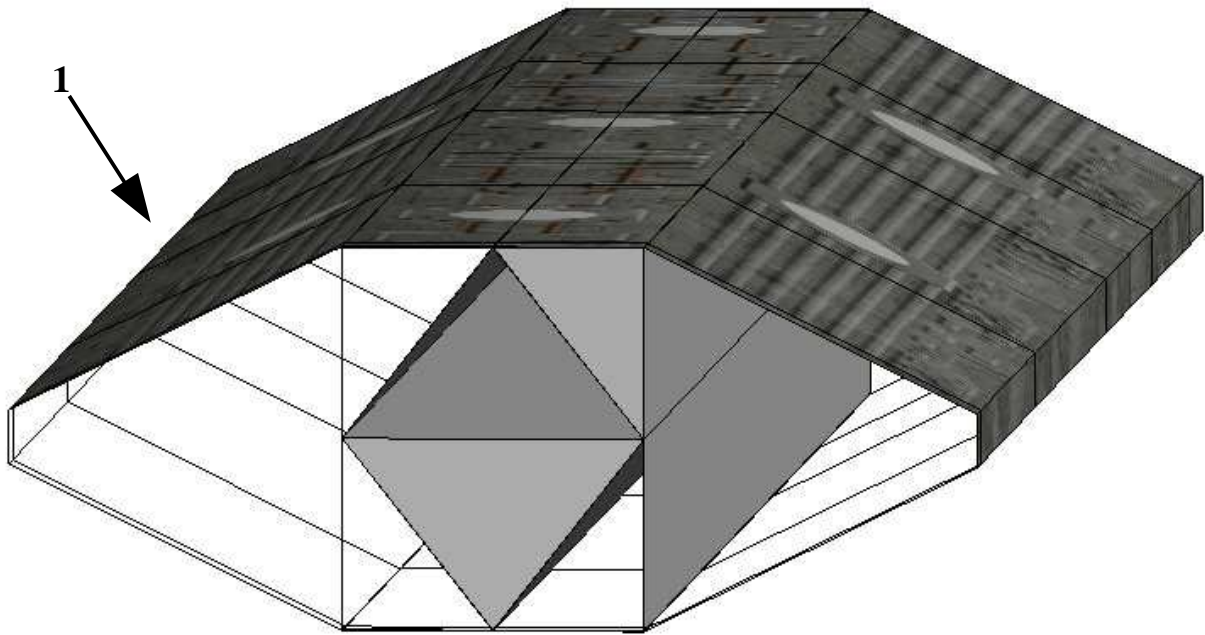
Original 3D model and textures by Coxson and MadJohn

Paper model by Steve Bondy

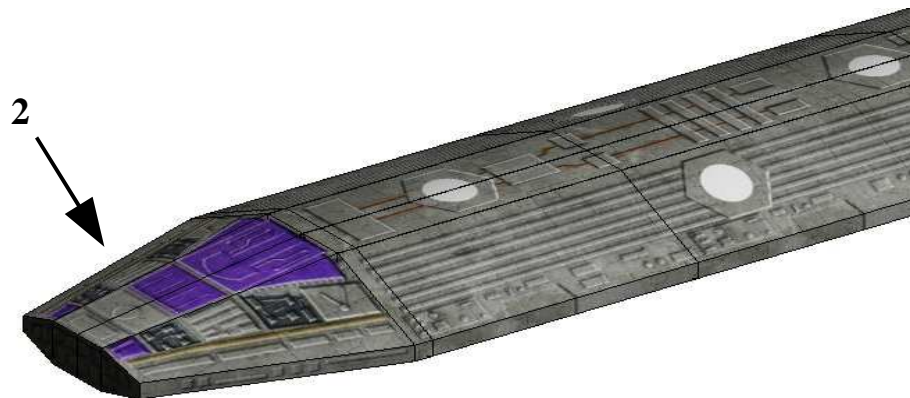
Begin by assembling the inner support structure (F1-F6) as shown on page 3 of the parts sheets.

Next assemble the main then insert the support structure and glue in place.

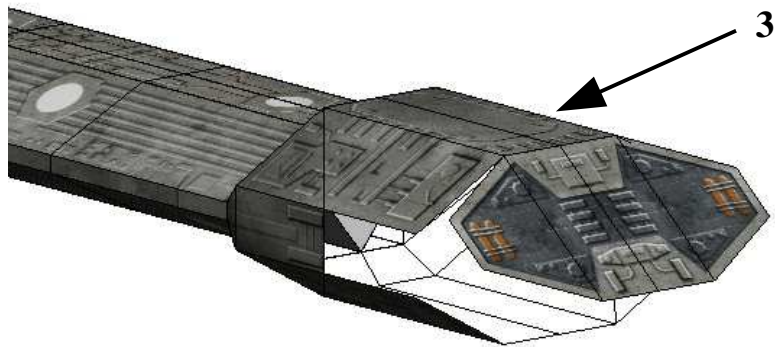
If you are using joining strips instead of the flaps, attach the joining strips to the hull sections first, then insert and attach the support structure.



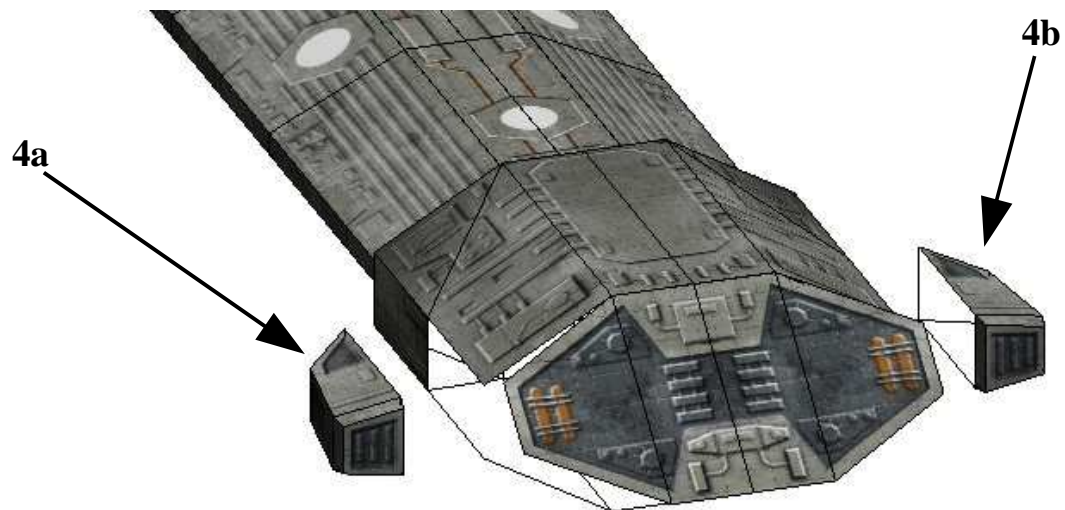
Next, assemble and attach the forward hull section



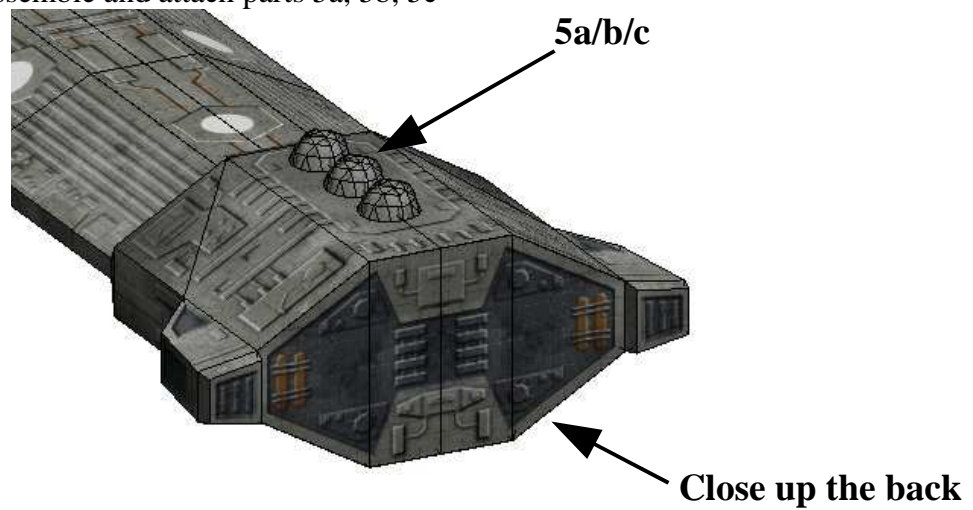
Shape and attach the rear hull section, but do not close the back.



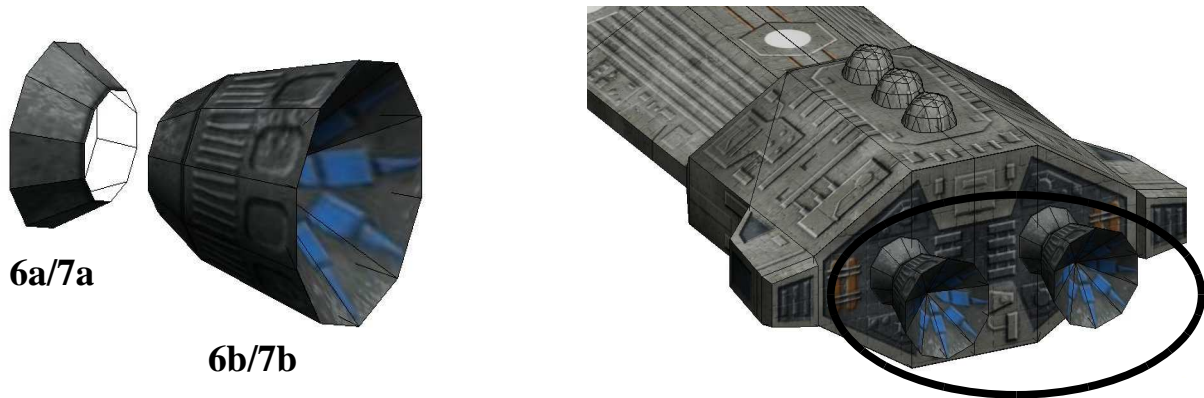
Assemble and attach parts 4a and 4b,



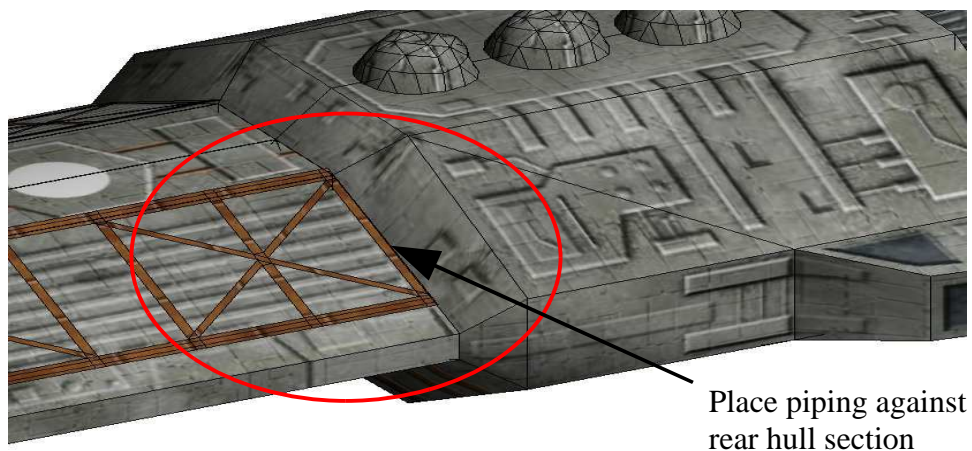
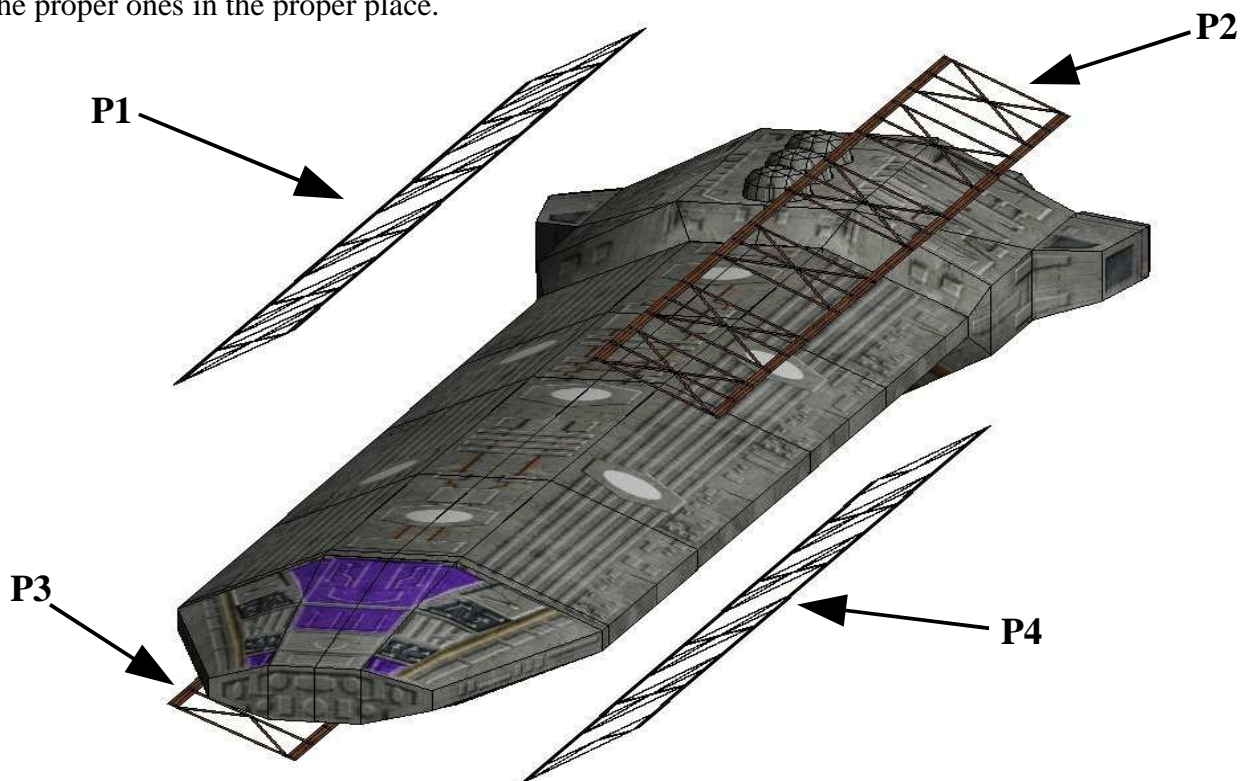
Close the back, then assemble and attach parts 5a, 5b, 5c

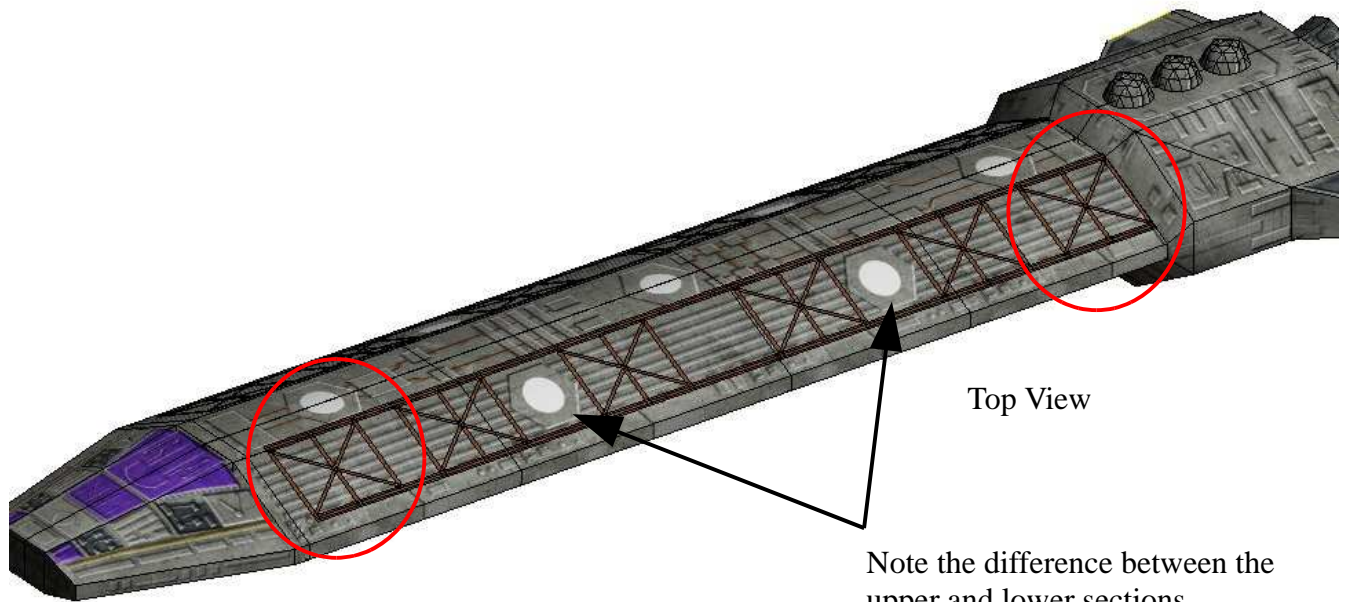


Assemble and attach the engines – 6a/6b and 7a/7b



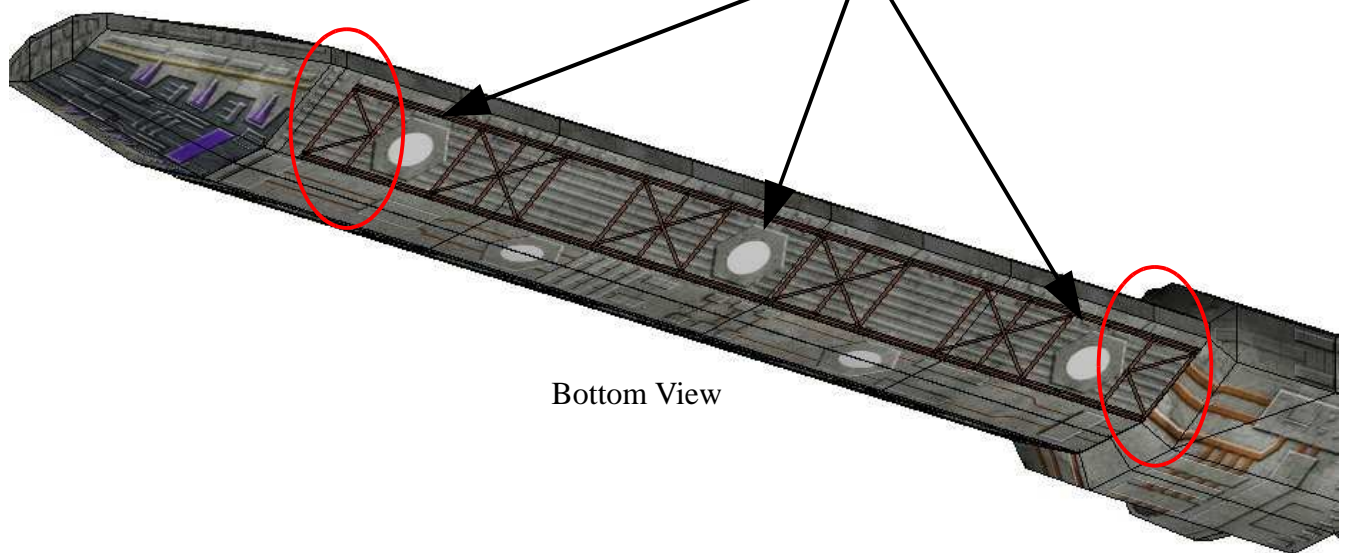
Now add the piping. The upper and lower piping assemblies are slightly different. Make sure you put the proper ones in the proper place.





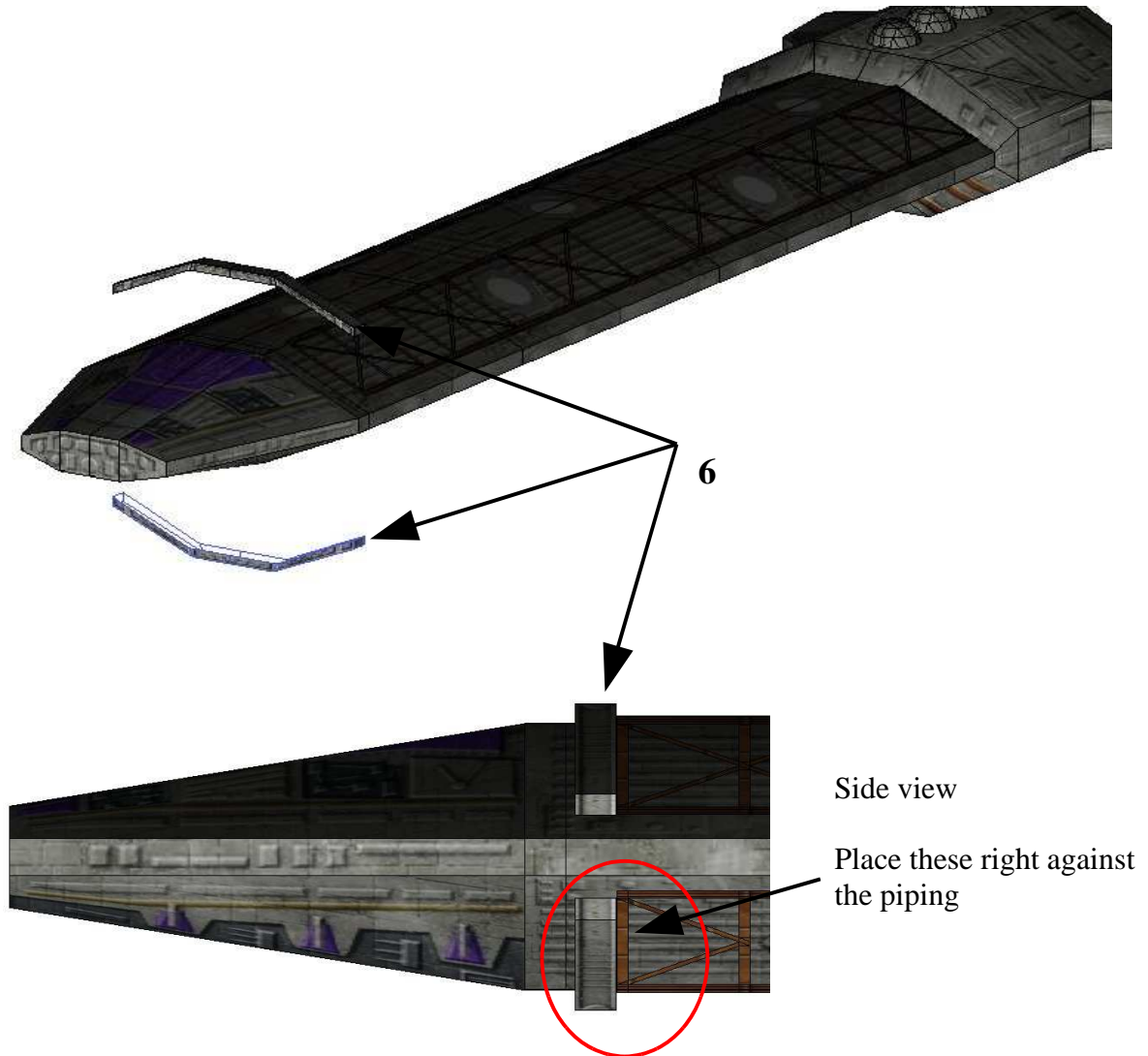
Top View

Note the difference between the upper and lower sections

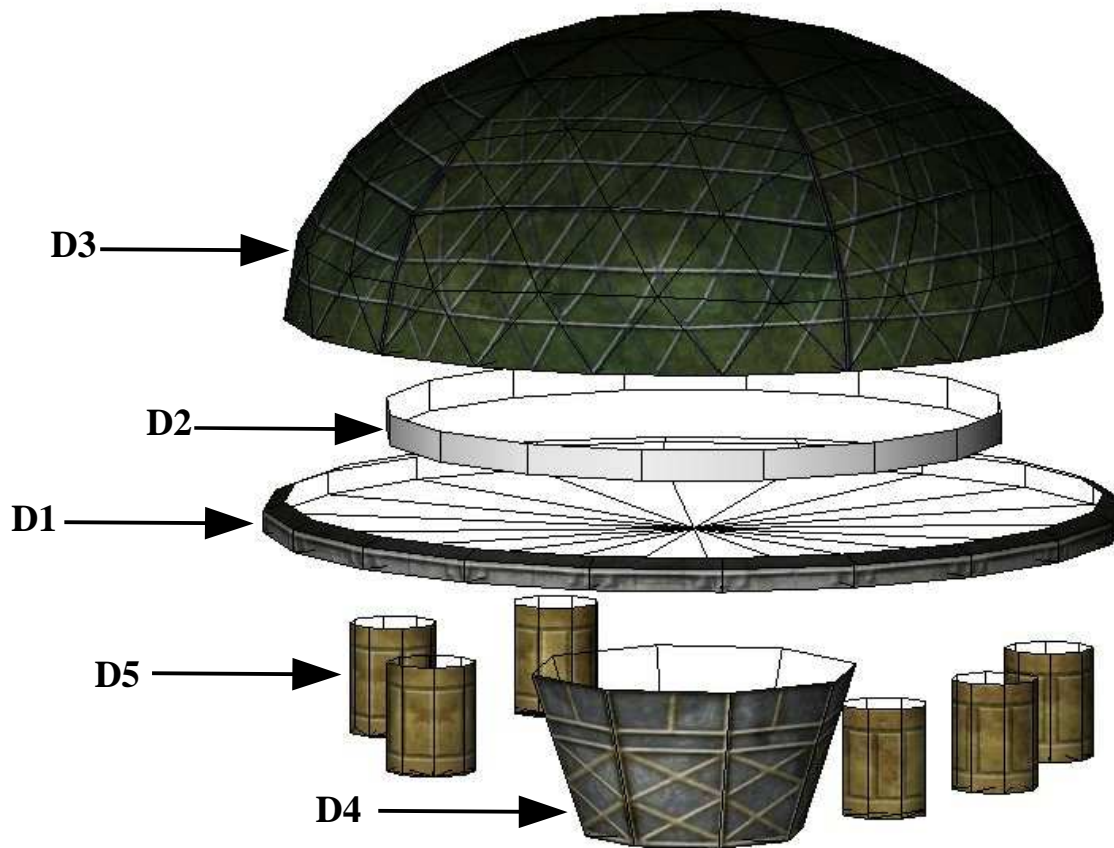


Bottom View

Add forward detailing

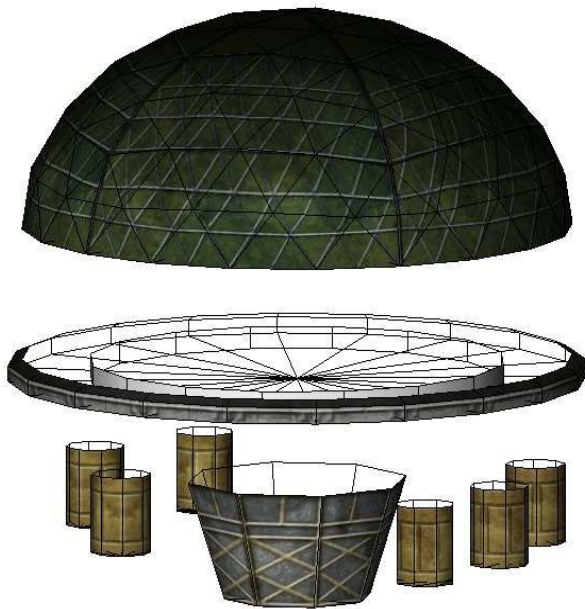


Now it's time to assemble and install the domes.

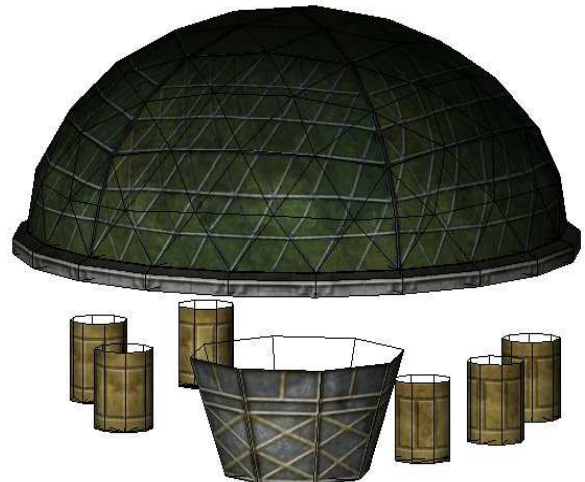


1. Assemble piece D1, working to keep it as flat as possible.
2. Shape and insert piece D2 and glue in place. The piece helps keep D1 flat, and supports D3
3. Attaching piece D3 to the D1/D2 assembly will be tricky. Good luck. I suggest you work slowly, gluing a couple tabs on one side, then a couple on the opposite side to help maintain symmetry. As you progress use a toothpick to get the glue between the pieces. Cutting another strip like D2, but longer so that it supports the tabs might help. I didn't think of that until just now, or I would have included it in the parts.
4. Assemble and install D4
5. Assemble and install D5 (six pieces).

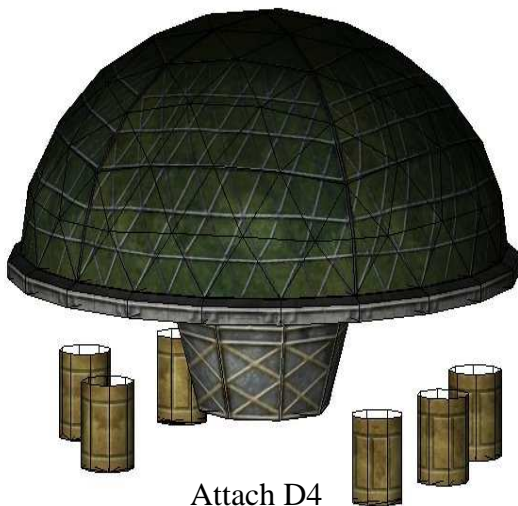
The following images illustrate the sequence



Insert D2



Attach D3



Attach D4



Attach all the little D5's

Assemble and install 15 of these domes, and

The model is complete!

Congratulations, and please post pictures.
Or better yet, a build thread for everyone to enjoy!